



# THE BELT RAILWAY COMPANY OF CHICAGO

## TRAIN DISPATCHER NOTICE

### #2021-008

Effective 0901, June 7, 2021

**To: Train Dispatchers, Clearing**

**Subject: Changes to Passenger Train Symbols, Belt Junction and 80<sup>th</sup> Street**

On Sunday, June 4<sup>th</sup>, 2021 at 1201, the Supplemental Train Sheet Manager (STSM) will be implemented. The Supplemental Train Sheet Manager (STSM) is a software application that provides for the automatic creation of train sheets for Metra and Amtrak passenger trains to support the daily pre-placement of train sheets into the CAD database. Note that all passenger trains at Belt Junction now run with a specific date. Train symbols will no longer be re-used.

This application also has the feature to interact with the CAD system and auto position these trains onto specific tracks designated in the configuration file, see Figure 1.

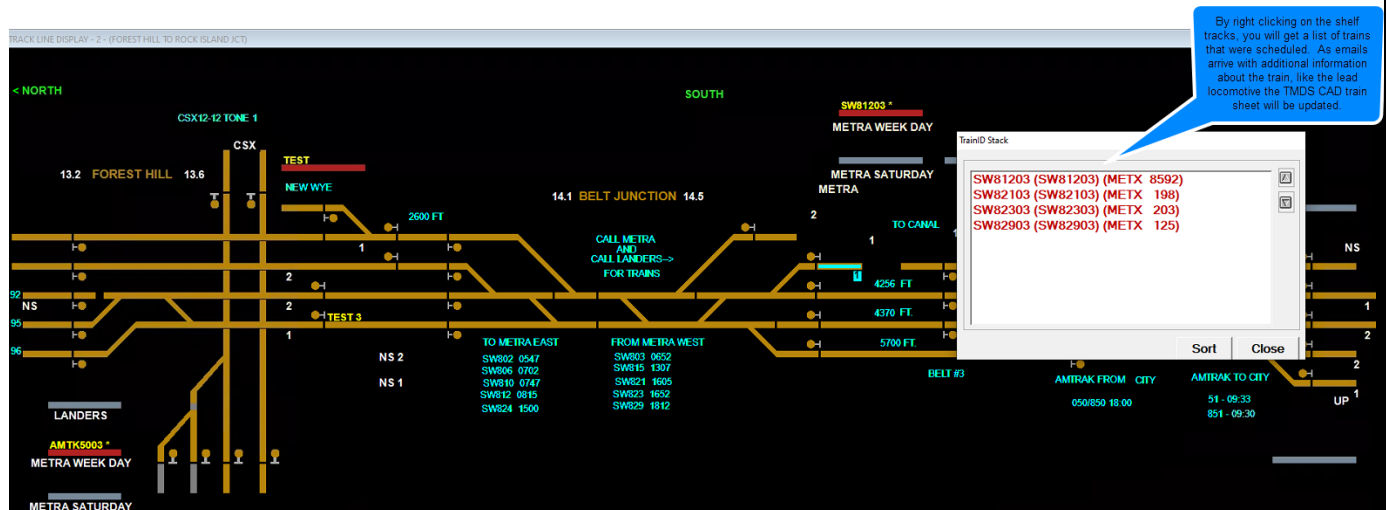
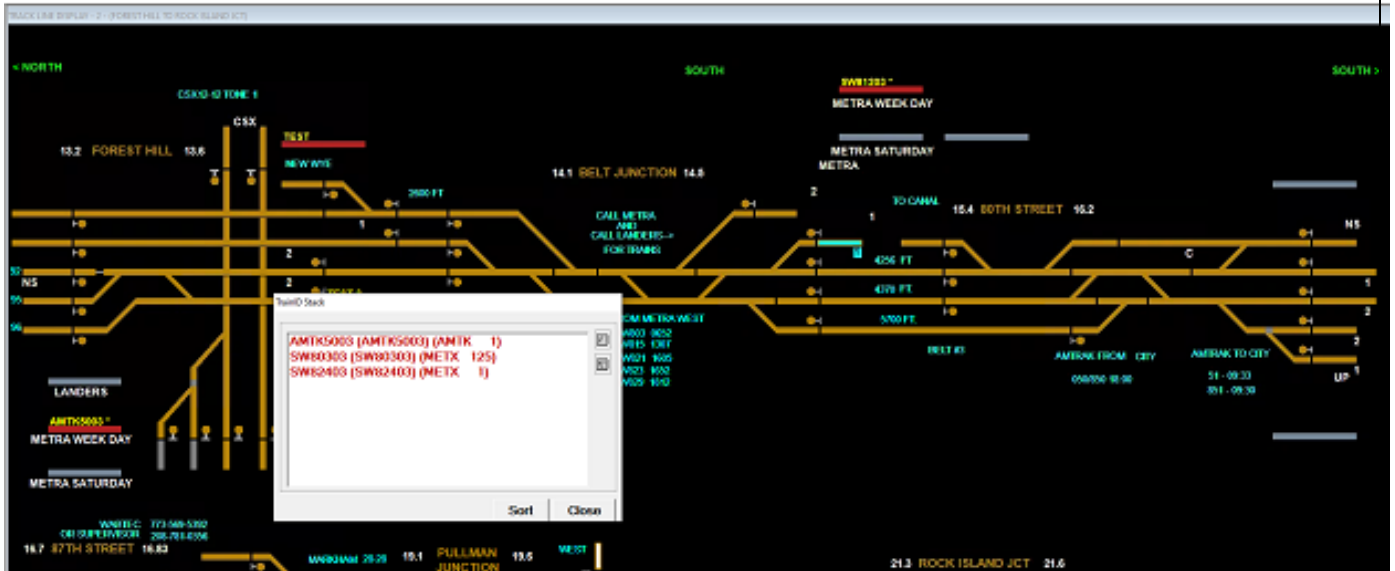


Figure 1 Example of Train IDs with Default Lead Locomotive ID



In Figure 2 an example of a Train ID that has not been updated due to a missing email with the lead locomotive ID.

The Dispatcher is still required to assign the DOB to each of these trains so that they can successfully initialize for PTC, see Figure 3.

BULLETIN SUMMARY

BULLETIN					DOB						
STATUS	LINE	NUMBER	TYPE	SUMMARY	STATUS	NUMBER	ROUTE CODE	DESIGNATION	LOCATION	TIME-DATE	SUMMARY
OK	59TH ST LINE	2002	FORM A	0.00F TO 3.0F (Main Track 2) (10) (10)	ACTIVE					12:04 06-04	TRAIN(S): BELT RAILWAY
OK	59TH ST LINE	2001	FORM A	0.01F TO 2.00F (Main Track 1) (10) (10)							
OK	KENTON LINE	2003	FORM A	6.53 TO 6.66 (Main Track One) (10) (10)							
OK	KENTON LINE	2004	FORM A	6.72 TO 8.23 (All Tracks) (20) (20)							

CREATE	
SEND	
VOID	
VIEW	
REFRESH VIEW	
ASSIGN DOB TO TRAIN	AMTK5003
	SW80303
	SW81203
	SW82103
	SW82303
	SW82403
	SW82903
	TEST
	TEST 3
	TEST PASS
CANCEL DOB ISSUED TO TRAIN	

Figure 3 DOB Assignment

Dispatchers can right click on any train in the train list in the shelf track window and modify any data that is necessary.

E-Mail messages from Metra will arrive if a crew change or locomotive has been made, but if you don't receive the change via the train sheet, you will need to modify the locomotive and/or crew information manually based on a conversation with the crew. See Figure 4 for an example of a train sheet to modify by right click on the shelf track and then when list of train IDs are displayed, right click on the train ID you want to modify.

This software application also provides the means to final train sheets, for all trains at BRC, from the active to inactive state in the CAD database and creates an archive of train movements.

This process is necessary so that FRA Train Sheet report can be generated based on 49 CFR Part 228.18 – Dispatcher's Record of Train Movements requirements. The current process, reusing train symbols, does not fulfill the requirements of the regulation.

Train IDs still on a shelf or another track component will need to be released so that they can be made inactive.

Once a train is released, the archive process will final the train. All exit track components in BRC territory are setup to release a Train ID when the train leaves the last dispatcher-controlled track, but there are times when they are left, and Train Dispatchers are required to release the Train ID when the train has completed its trip. See below on how to release train ID that did not release at the end of trip or the train did not run.

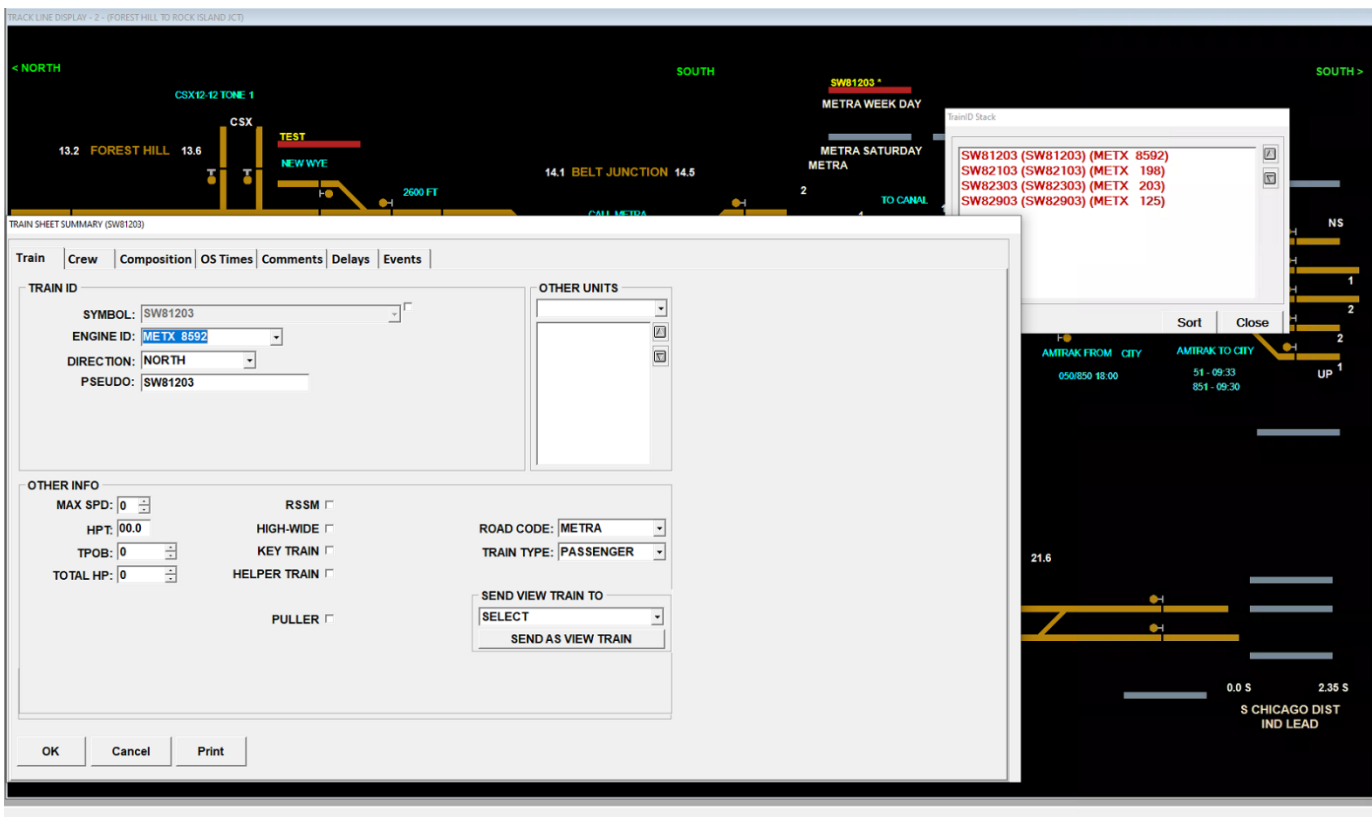


Figure 2 Train Sheet modify by right click on symbol

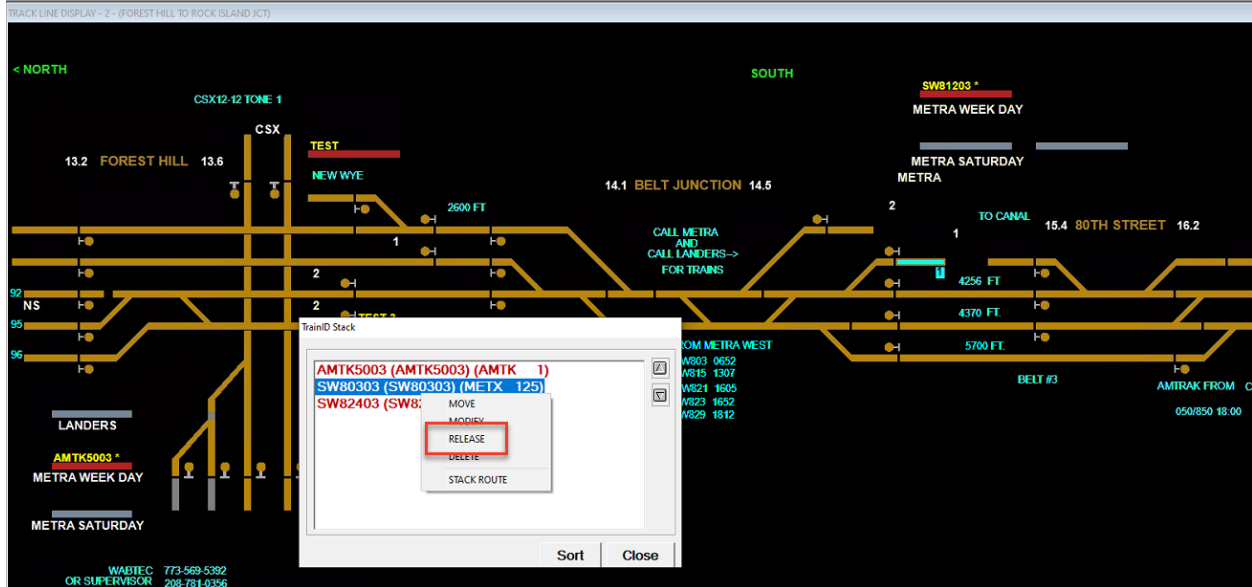


Figure 5 Release a Train ID from a track component

If you experience an issue, please send an email to: [Eileen.reilly@globaltrainservices](mailto:Eileen.reilly@globaltrainservices) with CC to [Cjonas@beltrailway.com](mailto:Cjonas@beltrailway.com) and [jszostak@beltrailway.com](mailto:jszostak@beltrailway.com).

**H.T. Kirman**  
**Secretary and Director of Compliance**

Train Dispatcher Notices in Effect:

<u>Year of Issuance</u>	<u>Numbers</u>
2016	1, 004, 005
2017	011
2018	002, 005 010, 012, 013
2019	001, 003, 006, 008, 012, 014
2020	005, 006, 007,
2021	003, 004, 006, ,008