



THE BELT RAILWAY COMPANY OF CHICAGO
Office of the Engineering Department

ENGINEERING GENERAL ORDER
#2019-EN001

Effective 0001, Friday, January 18, 2019

To: ALL CONCERNED

Subject: Linear Operations Profile Update

Attached are replacement pages for the BRC Linear Operations Profile No. 7, Effective August 13, 2018:

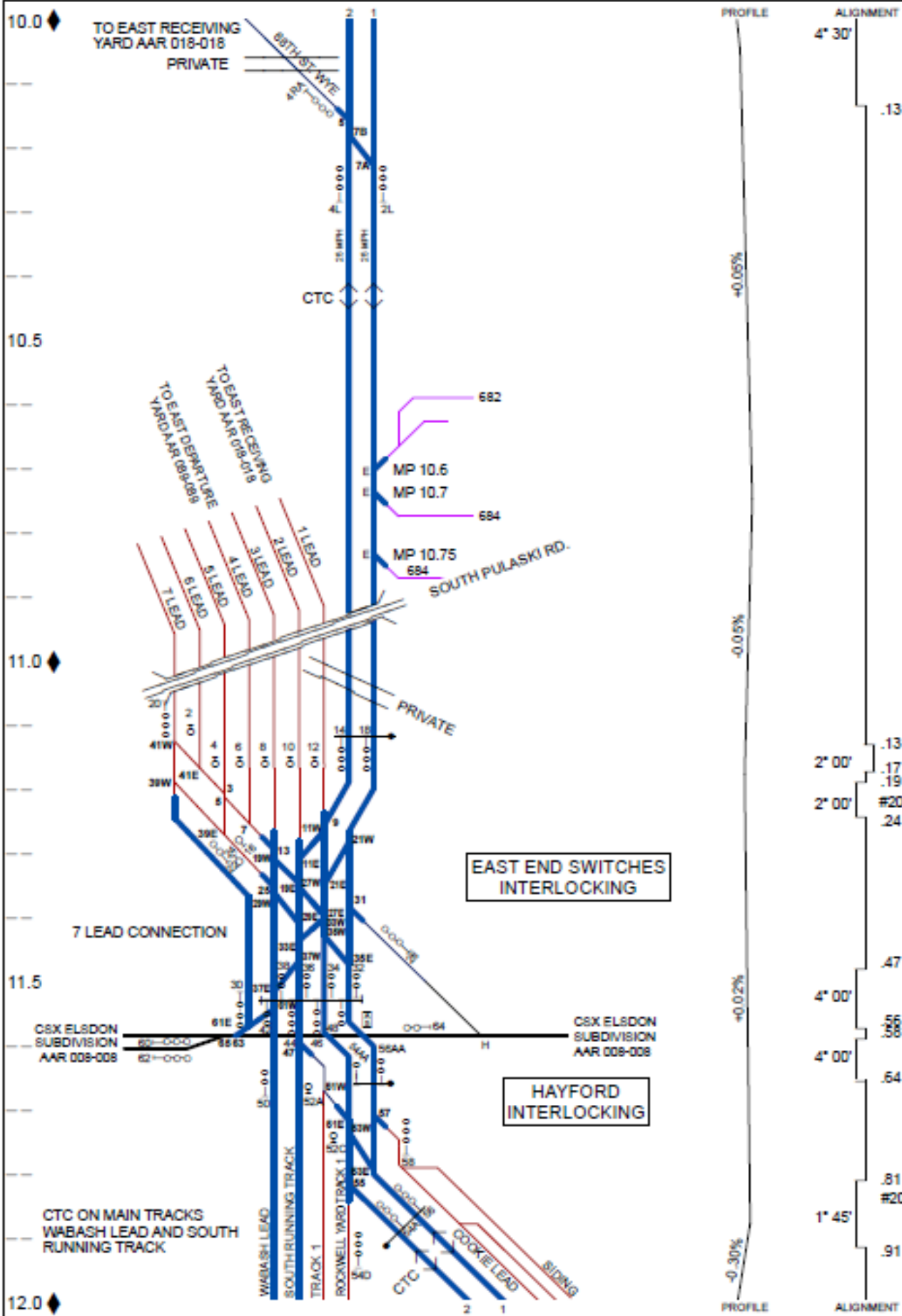
Remove the applicable pages from your Linear Operations Profile and replace with the new pages; update Page Check List in the front of the book:

- Kenton Line – Page 10
- Kenton Line – Page 10A

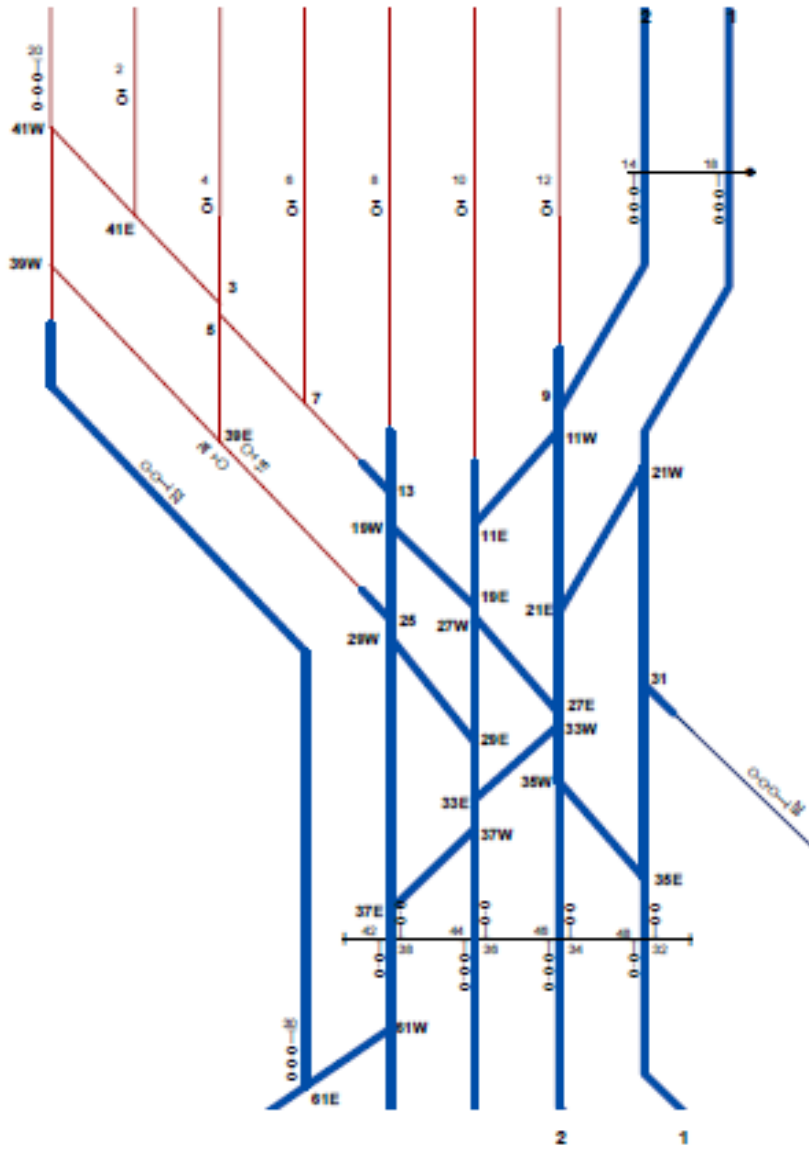
M. A. Ferguson, Chief Engineer

Engineering General Orders In Effect:

<u>Year of Issuance</u>	<u>Numbers</u>
2018	EN003, EN009
2019	EN001



BELT RAILWAY COMPANY OF CHICAGO - KENTON LINE MP 10 - MP 12 (REVISED 01/18/2019)



BELT RAILWAY COMPANY OF CHICAGO - KENTON LINE SUBDIVISION - EAST END SWITCHES (REVISED 01/18/2019)